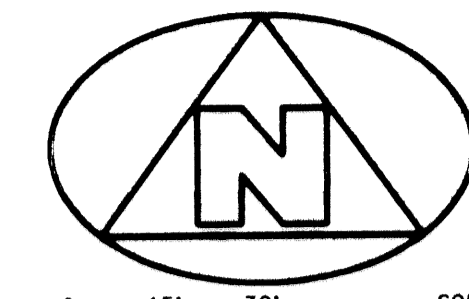
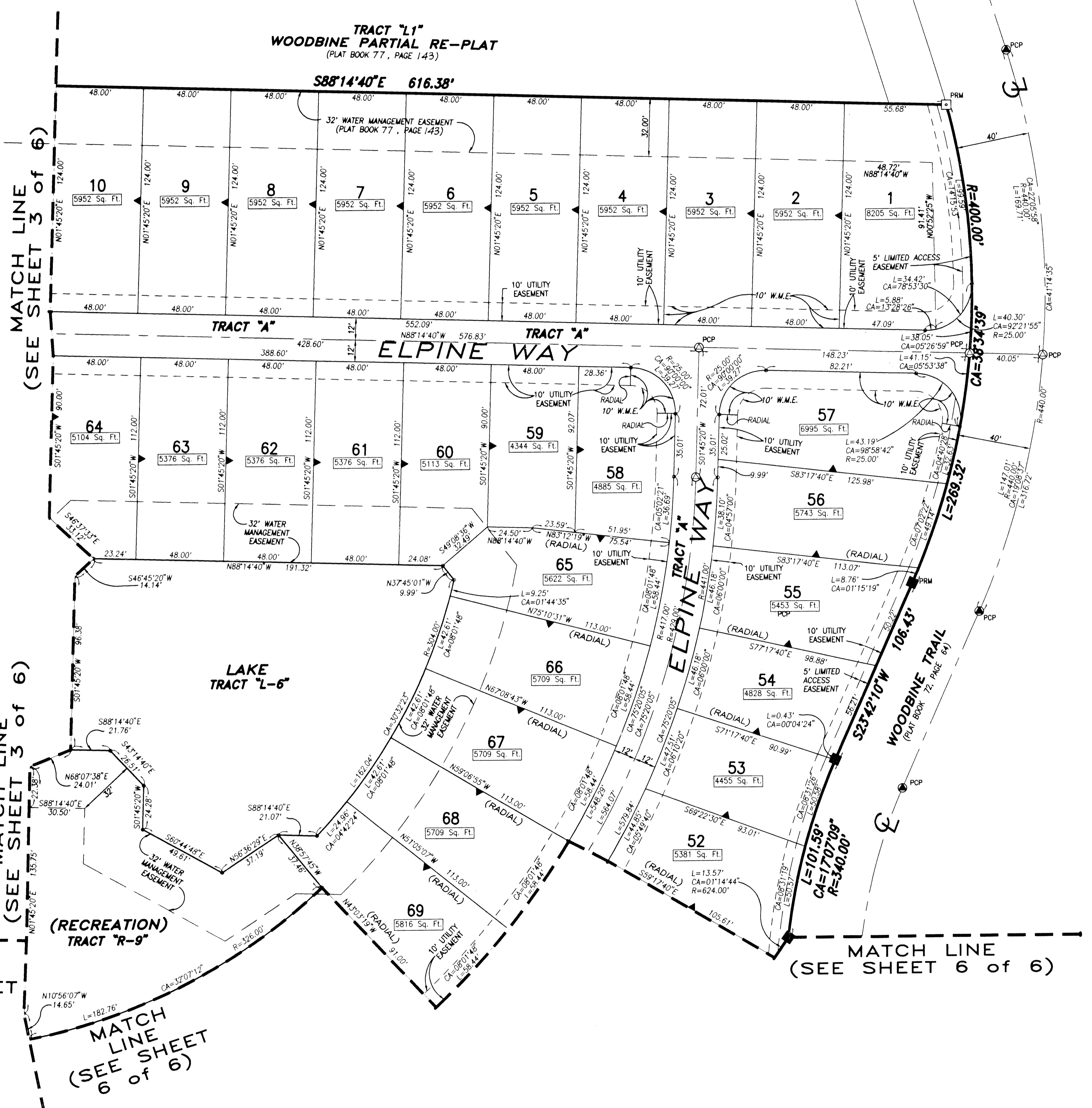
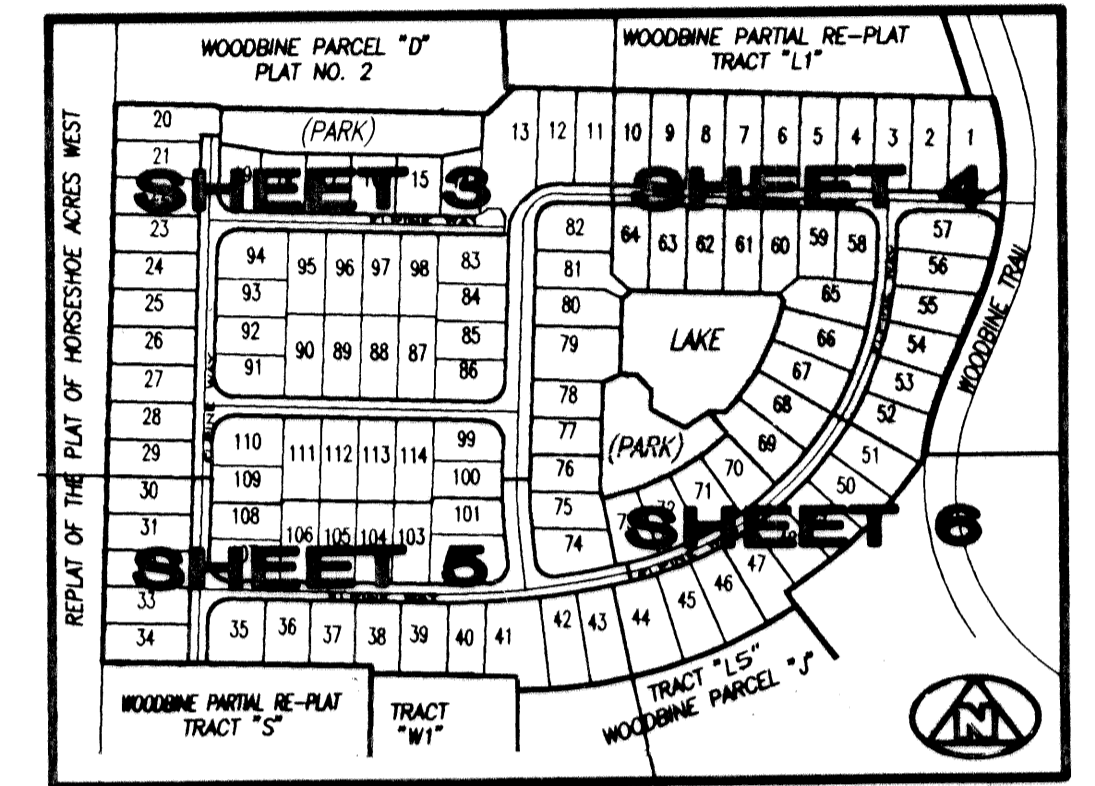


(A PART OF WOODBINE RESIDENTIAL PLANNED UNIT DEVELOPMENT)

LYING IN THE NORTHWEST ONE-QUARTER OF SECTION 25, TOWNSHIP 42 SOUTH, RANGE 42 EAST, CITY OF RIVIERA BEACH, PALM BEACH COUNTY, FLORIDA, AND BEING A RE-PLAT OF PARCEL "E", WOODBINE PARTIAL RE-PLAT, AS RECORDED IN PLAT BOOK 77, PAGE 143, PUBLIC RECORDS, PALM BEACH COUNTY, FLORIDA.



0 15' 30' 60'
GRAPHIC SCALE
(IN FEET)



MATCH LINE
(SEE SHEET 3 of 6)

MATCH LINE
(SEE SHEET 3 of 6)

MATCH LINE
(SEE SHEET 5 of 6)

MATCH LINE
(SEE SHEET 6 of 6)

MATCH LINE
(SEE SHEET 6 of 6)

WATER MANAGEMENT EASEMENT NOTE:
WATER MANAGEMENT EASEMENTS (W.M.E.), MAY BE SUBJECT TO FURTHER USE FOR WATER SUPPLY, ELECTRICAL POWER, TELECOMMUNICATIONS, AND CABLE TELEVISION. THERE SHALL BE NO PLACEMENT OF SUCH FACILITIES ON OR UNDER WATER MANAGEMENT EASEMENTS UNLESS PREVIOUSLY APPROVED, IN WRITTEN PERMIT FORM, BY THE NORTHERN PALM BEACH COUNTY IMPROVEMENT DISTRICT.

SURVEYOR'S NOTES AND LEGEND:

- IN THOSE INSTANCES WHERE UTILITY/DRAINAGE STRUCTURES ARE CONSTRUCTED IN CONFLICT WITH THE PLATTED PERMANENT CONTROL POINTS (P.C.P.) POSITION, STRADDLERS MONUMENTED AS PERMANENT CONTROL POINTS WILL BE SET TO REFERENCE THE PLATTED P.C.P. POSITION.
- LINE WHICH INTERSECT CURVES ARE NOT RADIAL, UNLESS OTHERWISE NOTED.
- C/L DENOTES A CENTERLINE
- W.M.E. DENOTES WATER MANAGEMENT EASEMENT
- 5' LAE DENOTES 5' LIMITED ACCESS EASEMENT
- 10' UE DENOTES 10' UTILITY EASEMENT
- P.B. PG. DENOTES PLAT BOOK & PAGE
- O.R.B. DENOTES OFFICIAL RECORDS BOOK
- PRM DENOTES A SET #2424 PERMANENT REFERENCE MONUMENT (P.R.M.)
- PCP DENOTES A SET #2424 PERMANENT CONTROL POINT (P.C.P.)
- PRM DENOTES A FOUND #2424 PERMANENT REFERENCE MONUMENT (P.R.M.)
- PCP DENOTES A FOUND #2424 PERMANENT CONTROL POINT (P.C.P.)
- ▲ DENOTES ZERO LOT LINE SIDE OF LOT

THIS INSTRUMENT WAS PREPARED BY WM. R. VAN CAMPEN, R.L.S., IN AND FOR THE OFFICES OF BENCH MARK LAND SURVEYING & MAPPING, INC., 4152 WEST BLUE HERON BOULEVARD, SUITE 121, RIVIERA BEACH, FLORIDA

BENCH MARK
Land Surveying and Mapping, Inc.
4152 West Blue Heron Blvd, Suite 121, Riviera Beach, FL 33404
Fax (407) 844-9659 Phone (407) 848-2102

RECORD PLAT		WOODBINE PARCEL "E"	
DWN	D/M	FB	DATE 06/01/96
CKD	FILE P11E-A.dwg	SCALE 1" = 30'	WO # P11
		SHEET 4 OF 6	